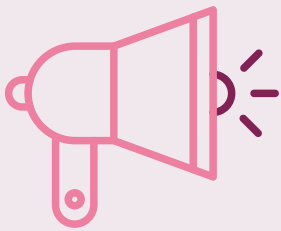




# Spring Newsletter



nurserylittleclovers



Little Clovers Nursery



## STAFF UPDATE

### DAISY ROOM

LISA & LUCY

### BUTTERCUP ROOM

TANEISHA, RACQUEL &  
ELLE

### LILY ROOM

FARRAH, SADIE & JESS



## REMINDERS

WE SAY GOODBYE TO FARRAH ON 16TH JANUARY AS SHE GOES  
ON MAT LEAVE

WELCOME BACK LEAH FROM 28TH JANUARY FROM MAT LEAVE

# Spring Newsletter



## Weather & Spare Clothes



PLEASE ENSURE YOU PROVIDE  
APPROPRIATE CLOTHING FOR ALL WEATHER

CHILDREN WILL GET DIRTY IN THE GARDEN AS WE  
EXPLORE THE MUD KITCHEN AND WITH THE  
CHANGE IN WEATHER ON THE GRASSED AREA

WE RECCOMEND AT LEAST 2 TOPS AND 3 PAIRS  
UNDERWEAR, SOCKS AND BOTTOMS IF YOUR CHILD  
IS TOILETTRAINING



# Spring Newsletter



We kindly ask for your support in spreading the word about our amazing nursery. If you would be willing to help distribute flyers to your workplaces, places of worship, community groups, or any other relevant locations, please let us know.



We'd love to hear about your experience. Please consider leaving a review on Google and sharing your thoughts on our social media platforms.



nurserylittleclovers



Little Clovers Nursery



# Spring Newsletter



## Funded Childcare

DEADLINE TO APPLY IS  
31ST MARCH FOR  
FUNDING TO BE USED  
FROM 21ST APRIL 2025

**DON'T FORGET**

REMEMBER TO  
RECONFIRM YOUR  
CODE EVERY 3  
MONTHS.

## Important dates

HALF TERM  
17TH FEB - 21ST FEB

CLOSED FOR TRAINING:  
FRIDAY 21ST FEB  
(CLOSE AT 1PM)

**IMPORTANT!**

If you have any questions or require further information please speak to a member of the nursery management team or email [lcn@cloverleafworld.org](mailto:lcn@cloverleafworld.org)

# Spring Newsletter



## Inspection of Little Clovers Nursery

Craven Gate House, New Craven Gate, Leeds LS11 5NF

Inspection date: 5 December 2024

<b>Overall effectiveness</b>	<b>Good</b>
The quality of education	<b>Good</b>
Behaviour and attitudes	<b>Good</b>
Personal development	<b>Good</b>
Leadership and management	<b>Good</b>
Overall effectiveness at previous inspection	Not applicable



Leaders and staff have worked hard to establish a clear curriculum, which builds on what children know and can do as they progress through the nursery. Staff liaise with local schools to find out what is most important for when children start school.

Children are welcomed warmly into the setting. They develop warm and trusting relationships with staff. Children show they feel comfortable with the staff. Babies seek staff out for a cuddle when they are feeling unsure. Children are supported to learn about different emotions they may be experiencing. Staff skilfully label these emotions and work with children to understand why they might be feeling a certain way. Staff are kind and caring and have high expectations of children's behaviour. They support children to take turns and share resources. As a result, children show high levels of respect for each other.

- Staff skilfully use a range of mathematical language in play. For example, they count bricks with babies as they are building a tower. Older children play games in which they are challenged to find a certain number of objects. This helps to support children's early concept of number.

**Exciting News! Our nursery has been featured in an article in the Yorkshire Evening Post. Be sure to visit their website and check it out!**

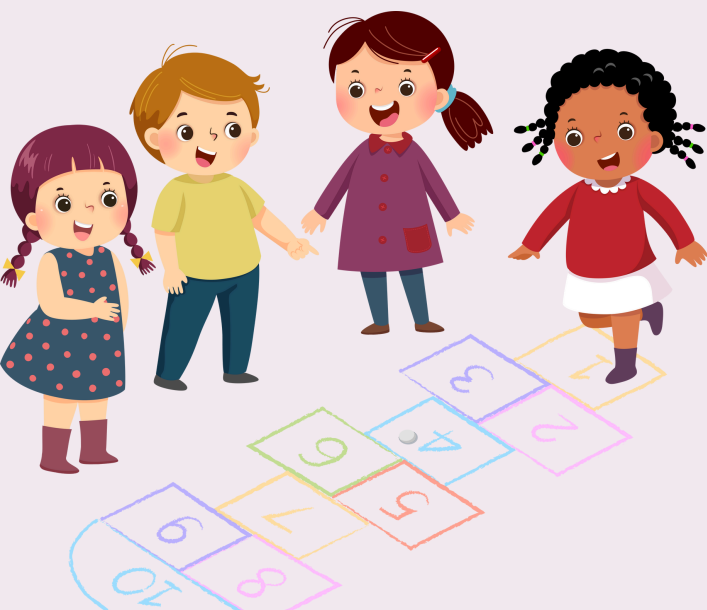


# Spring Newsletter



WE'RE EXCITED TO ANNOUNCE THE EXPANSION OF OUR BEFORE AND AFTER SCHOOL CLUB, AS WELL AS OUR SCHOOL HOLIDAYS CLUB!

WE'LL BE STARTING WORK ON THIS PROJECT THIS TERM, AND WE'RE AIMING TO HAVE IT READY FOR THE SUMMER TERM IN APRIL






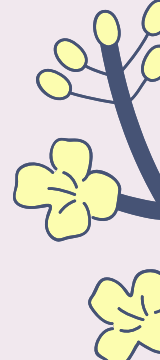
# Spring Newsletter




## Parking at Nursery



We have recently experienced issues with vehicles being left outside the nursery for extended periods of time. In response, our staff have begun parking on the road to prevent cars from being left unattended. Additionally, we are placing cones to help reserve spaces specifically for nursery users.



Please note that parents and carers are welcome to park in these reserved spaces, as well as in the car park located at the side of the building during drop-off and pick-up times. We appreciate your understanding and cooperation in helping us maintain a smooth and safe parking arrangement for everyone.



Thank you for your continued support!

[WWW.LITTLECLOVERSNURSERY.CO.UK](http://WWW.LITTLECLOVERSNURSERY.CO.UK)

